

Controller

Pressure controller:

- Pressure controller (N)

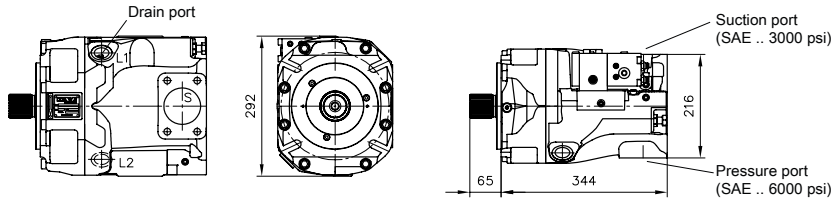
Delivery flow controller:

- Load-sensing controller (LSN)

Power controller:

- Power controller (L)

General parameters and dimensions

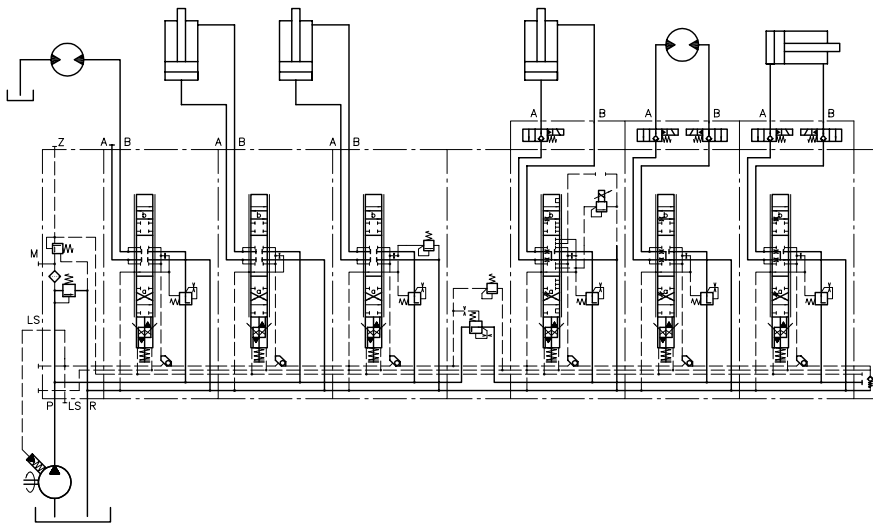


(connection locations for clockwise operation)

Parameters

	Geom. output volume V_g [cm ³ /rev]	Nominal pressure p_{nom} (p_{max}) [bar]	Self-suction speed n [min ⁻¹]	Ports			m [kg] (with controller)
				Drain port	Suction port	Pressure port	
V80M - 200	200	400 (450)	1800	G 1	3"	1 1/2"	130 (136)

Circuit example:



Associated technical data sheets:

- [Variable displacement axial piston pump V80M: D 7962 M](#)

Similar products:

- [Variable displacement axial piston pump type V40M: D 7961](#)
- [Variable displacement axial piston pump type V60N: D 7960 N](#)
- [Fixed displacement axial piston pump type K60N: D 7960 K](#)
- [Axial piston motors type M60N: D 7960 M](#)

Suitable prop. directional spool valve:

- Types PSL/PSV sizes 2, 3 and 5: [D 7700-2](#), [D 7700-3](#), [D 7700-5](#)
- Type PSLF/PSVF sizes 3, 5 and 7: [D 7700-3F](#), [D 7700-5F](#), [D 7700-7F](#)

Suitable accessories:

- [Proportional amplifier type EV1M3: D 7831/2](#)
- Programmable logic valve control type PLVC: [D 7845-21](#), [D 7845-41](#), [D 7845 M](#)